












Structural basis for transcriptional regulation by the cell division regulator MraZ in *Mycoplasma genitalium*

Received: 28 July 2025

Accepted: 8 January 2026

Published online: 29 January 2026

 Check for updates

Lucía Sánchez-Alba ¹, Nathalia Varejão ¹, Alexandre Durand ²,
Javier García-Pardo ¹, Maria Carreras-Caballé ³, Virginia Amador ³,
Jaume Pinyol ¹ & David Reverter ¹ 

Cell division is a central process in all living organisms and requires the coordinated action of many proteins and regulatory elements. In most bacteria, the division and cell wall (*dcw*) gene cluster is regulated by the first gene of the *dcw* operon, *mraZ*, a highly conserved DNA-binding transcriptional regulator. Here

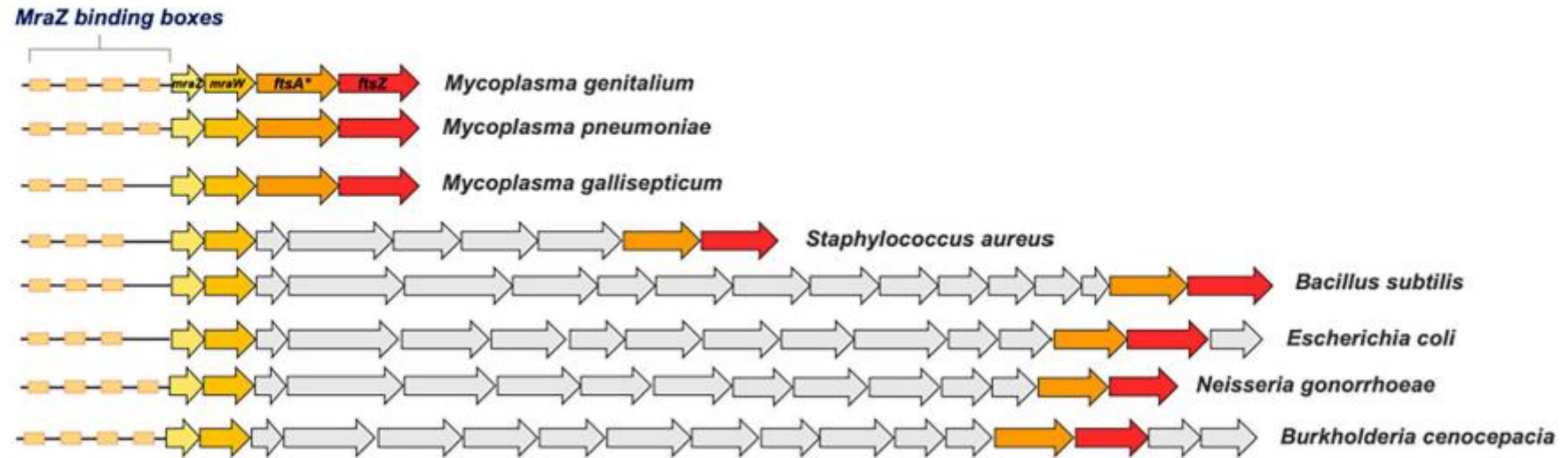
A bakteriális sejtosztódást szabályozó
molekuláris mechanizmus
(azonosítása)

Az instrukciók az osztódás folyamatához

Egy géncsoportba szerveződnek

Aminek **dcw operon** a neve

a

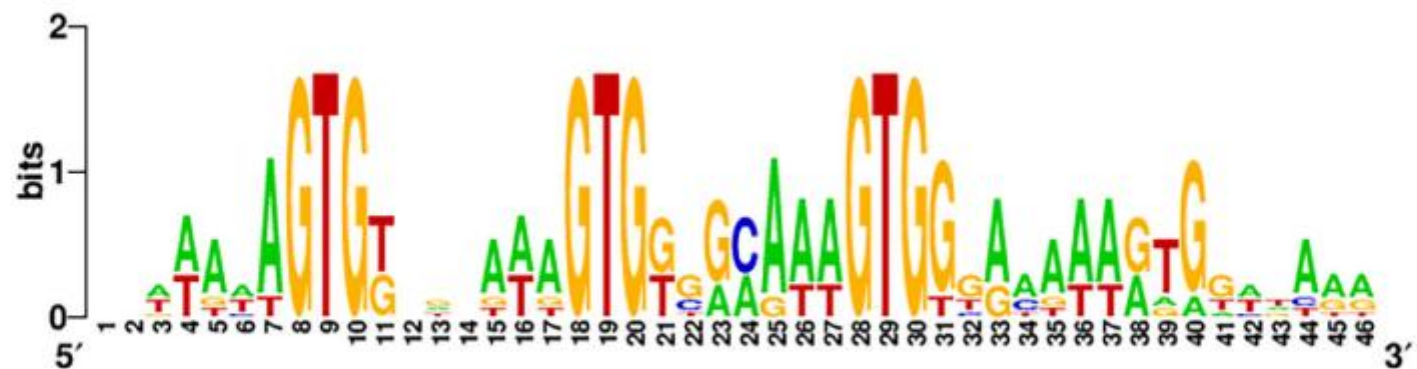


b

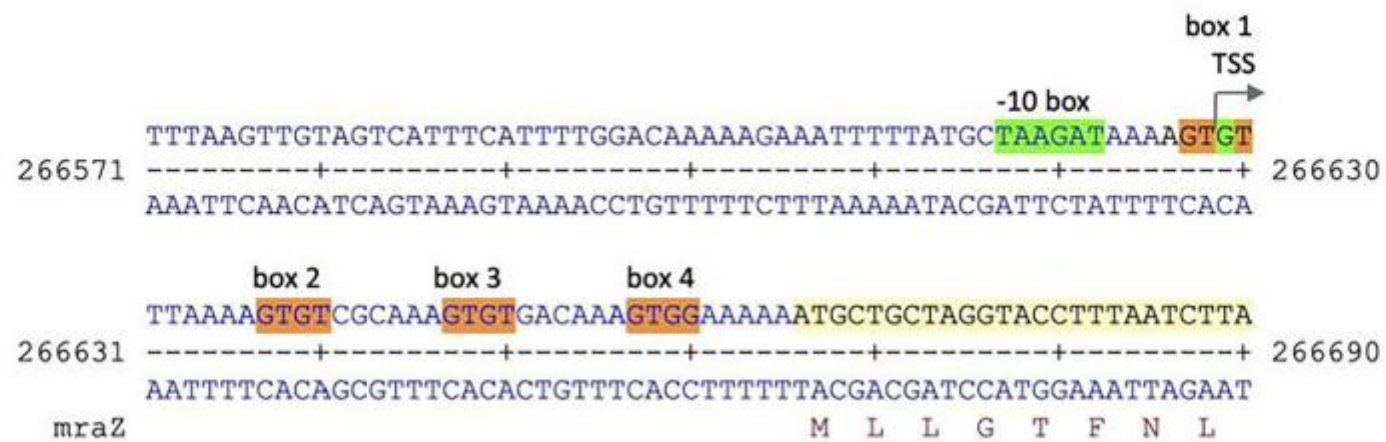
<i>Mycoplasma genitalium</i>	GATAAAA GTGT TTAAAA GTGT CGCAAA GTGT GACAAA GTGG AAAAA
<i>Mycoplasma pneumoniae</i>	ATATAAA GTGT TTTAAA GTGT CACAAA GTGG CATAAA GTGG TAAAA
<i>Mycoplasma gallisepticum</i>	TTGAAAA GTGT TAAAAA GTGT GACAAA GTGG GAAAAAATGATTTAA
<i>Staphylococcus aureus</i>	ATAAATA GTGG TGGATA GTGG GGAGAT GTGG TAAATTATATATAAG
<i>Bacillus subtilis</i>	TGAAGTT GTGG AGCGAA GTGG TGAATA GTGG TGAGTTAAGGAGAGA
<i>Escherichia coli</i>	CCTTTCA GTGG GAAATT GTGG GGCAAA GTGG GAATAAGGGGTGAGG
<i>Neisseria gonorrhoeae</i>	TCTTATA GTGT CGATT GTGG GAATT GTGG GGCAAA GTGT CTCTT
<i>Burkholderia cenocepacia</i>	CTCTAA GTGG GAGACA GTGT GAGAAA GTGT ATTTTT GTGT GATTT

Operon:

Több, egymással összefüggő funkciójú génből álló DNS-szakasz, amely egy közös promóter irányítása alatt egyszerre fejeződik ki.



C



A dcw operonban levő gének klaszterét fehérjék kapcsolják be:

transzkripciós faktorok (TF)

Ezek a DNS specifikus régiójához, a promoter-hez kapcsolódnak.

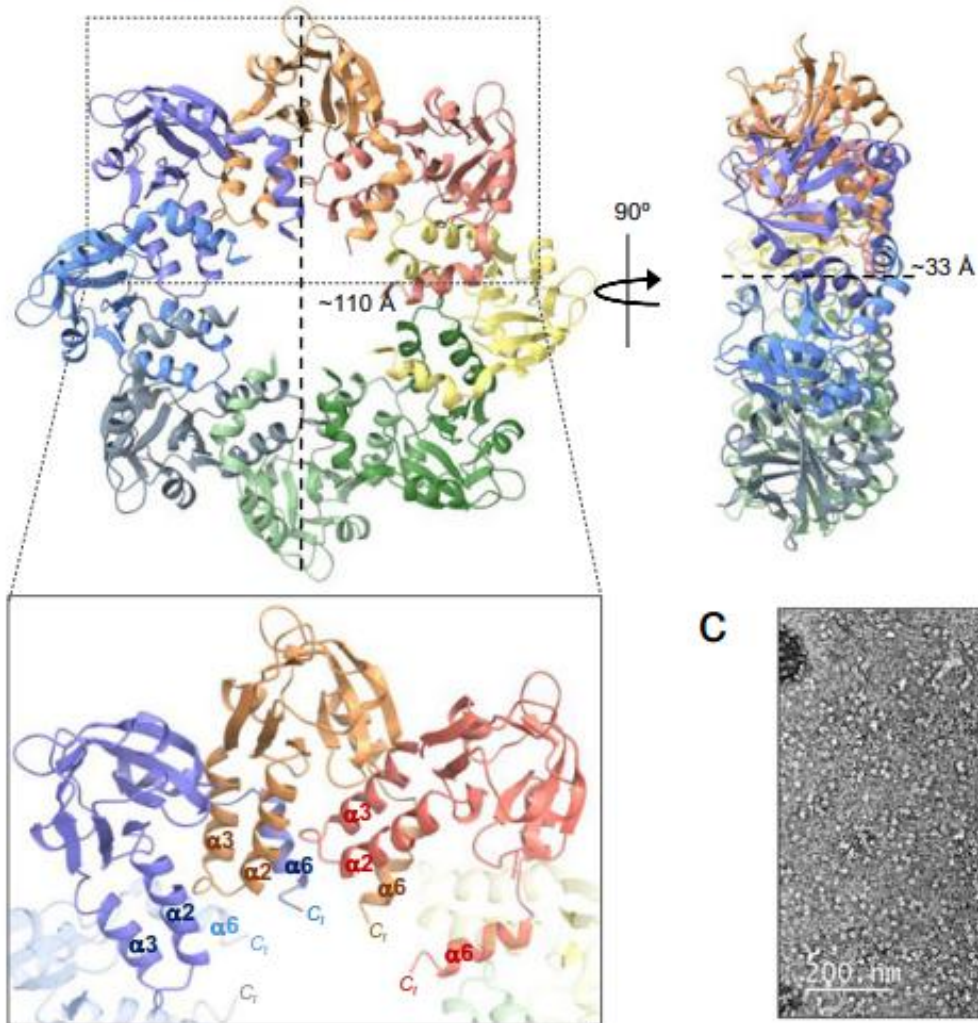
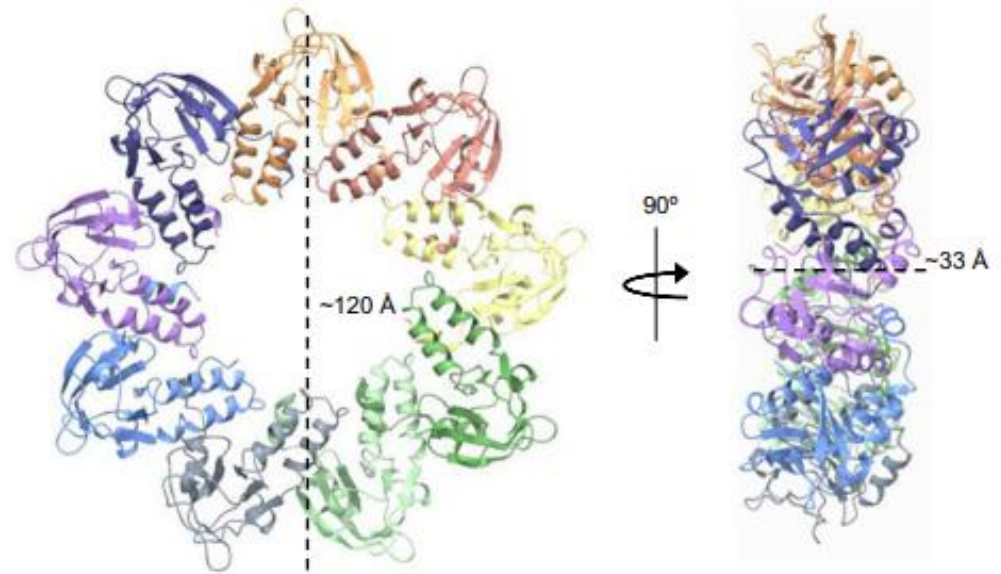
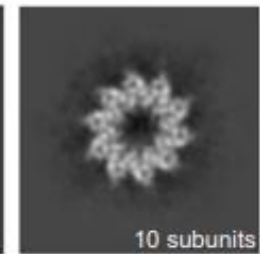
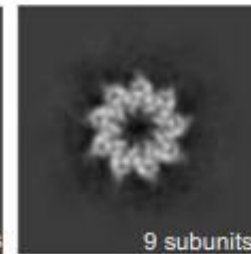
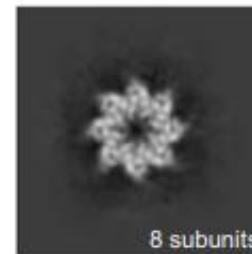
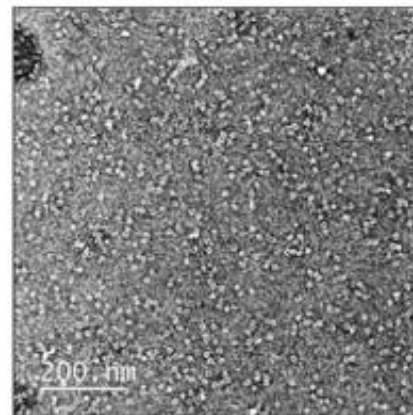
A promoter általában a fehérje szekvenciát kódoló szakasz első kodon-ja előtt van (közvetlenül)

A bakteriális osztódás molekuláris mechanizmusának vizsgálata
képalkotással

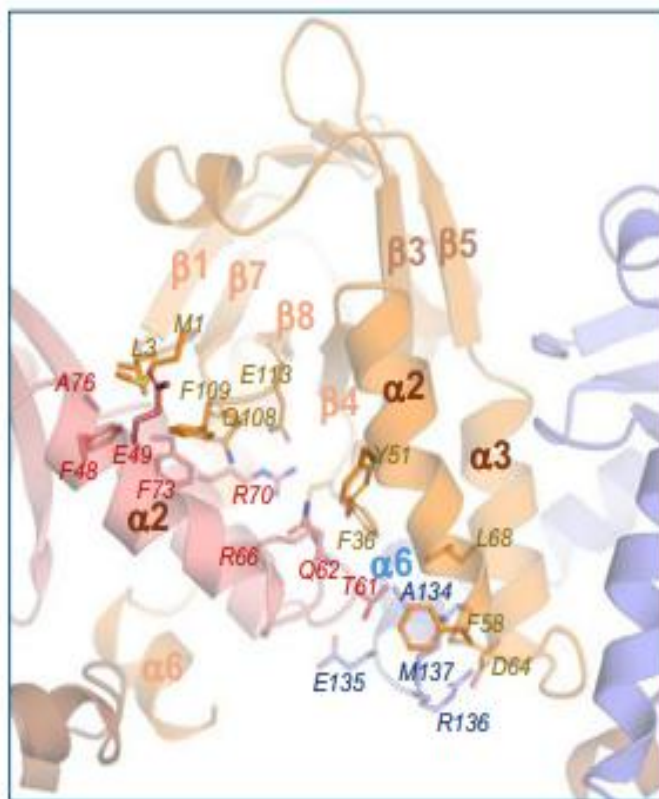
Röntgen-krisztallográfia
Krio-elektron mikroszkópia

MraZ TF
A dcw operon promotere
Mycoplasma genitalium baktériumban

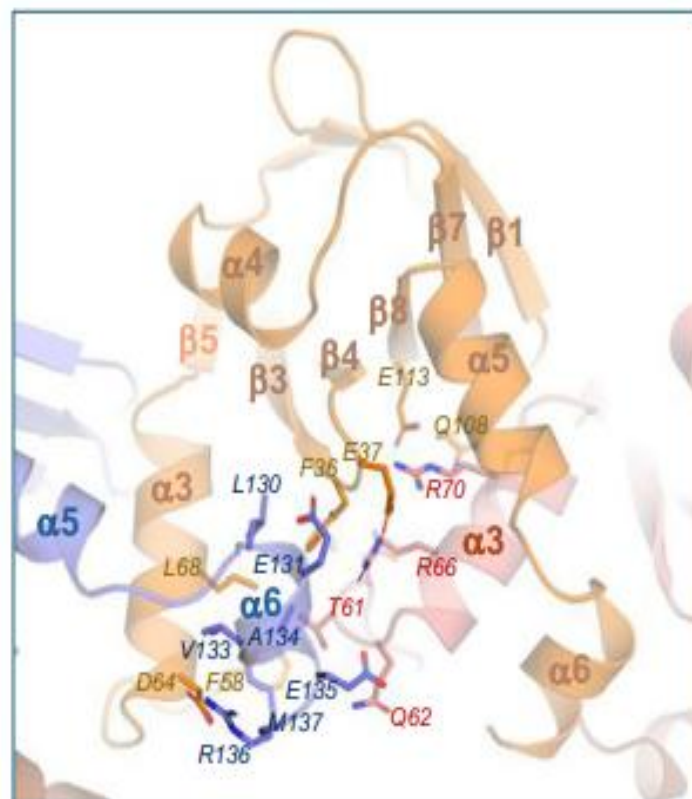
Rendkívül kicsi genomja van.

a*MraZ octamer***b***MraZ nonamer***c**

d



180°
↻



A dcw promoter régiója négy ismétlődő szegmenst tartalmaz

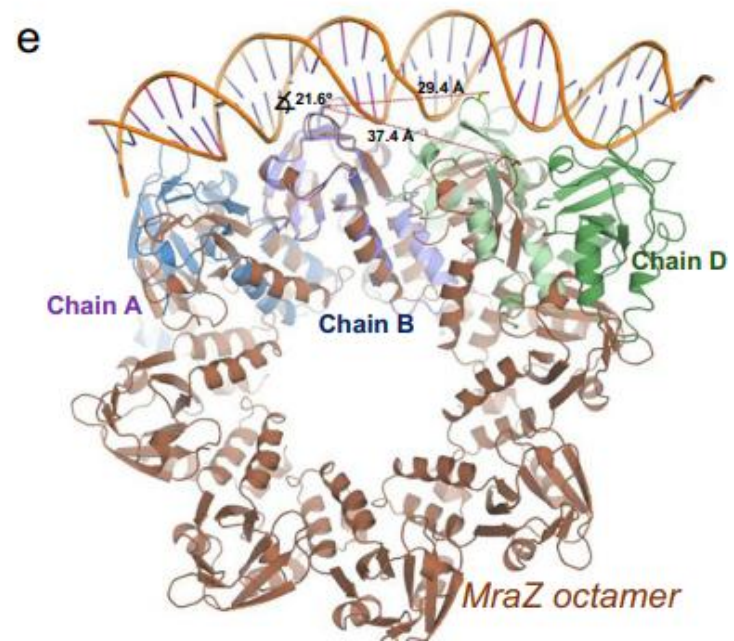
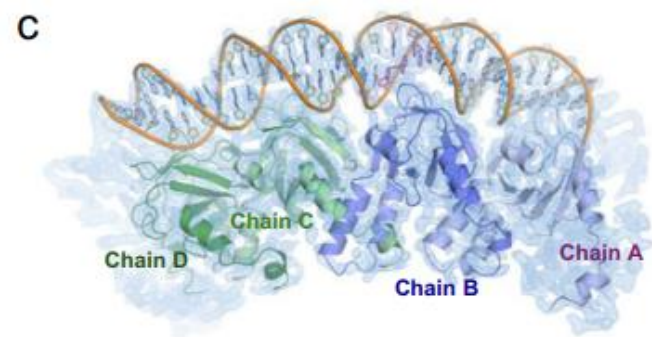
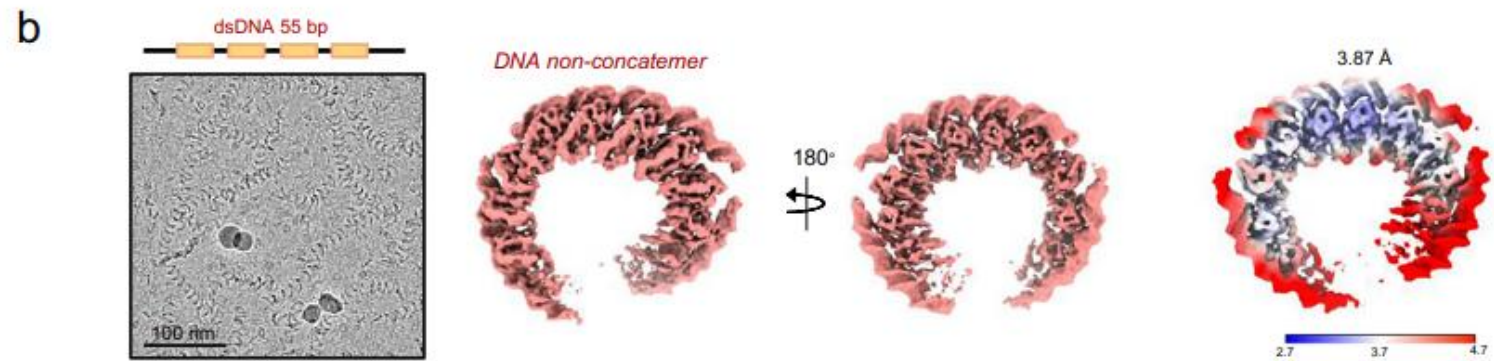
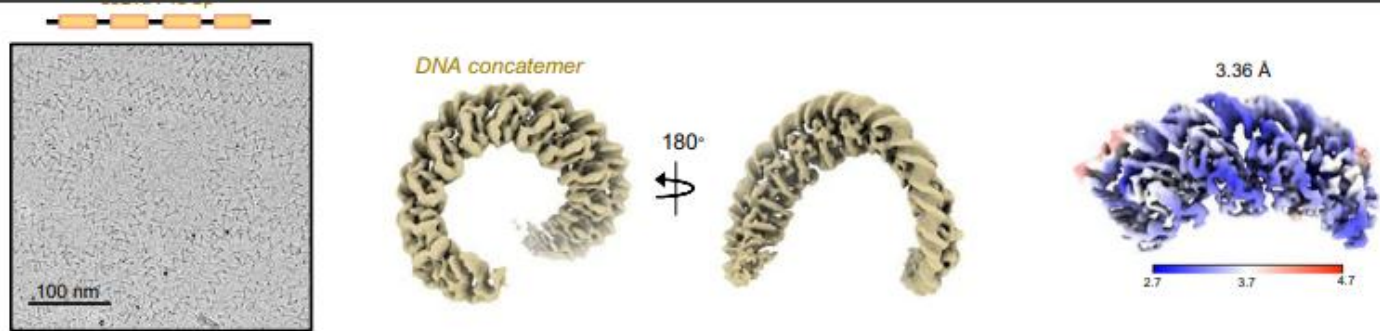
Ezek a „doboz”-ok (boxes)

Mindegyik 6 nukleotidból áll

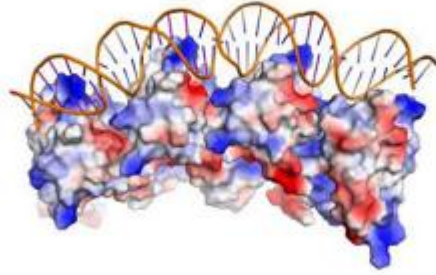
A MraZ fehérje ezekhez kapcsolódik

Csak hogy a MraZ donut alakú, kerek, nyolc alegységből álló fehérje

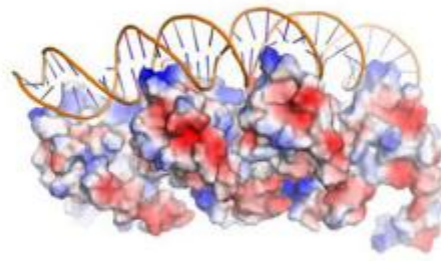
A kérdés az volt, hogyan tud úgy megváltozni, hogy a négy régióhoz kötődni tudjon.



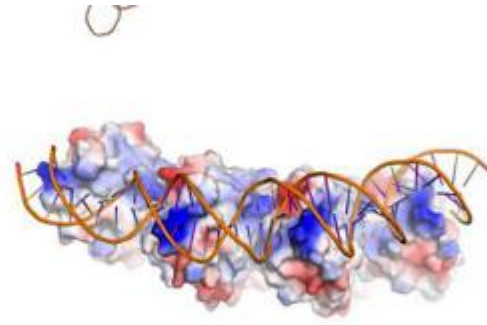
d

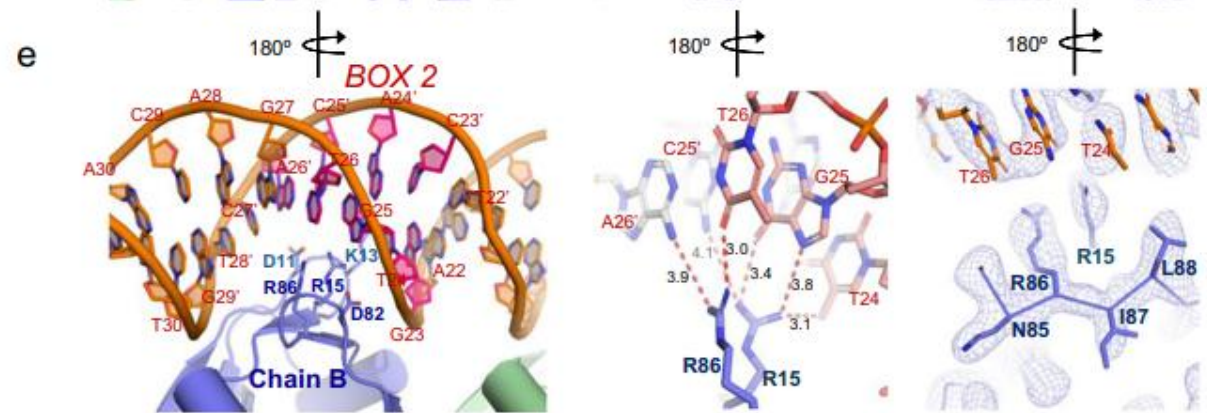
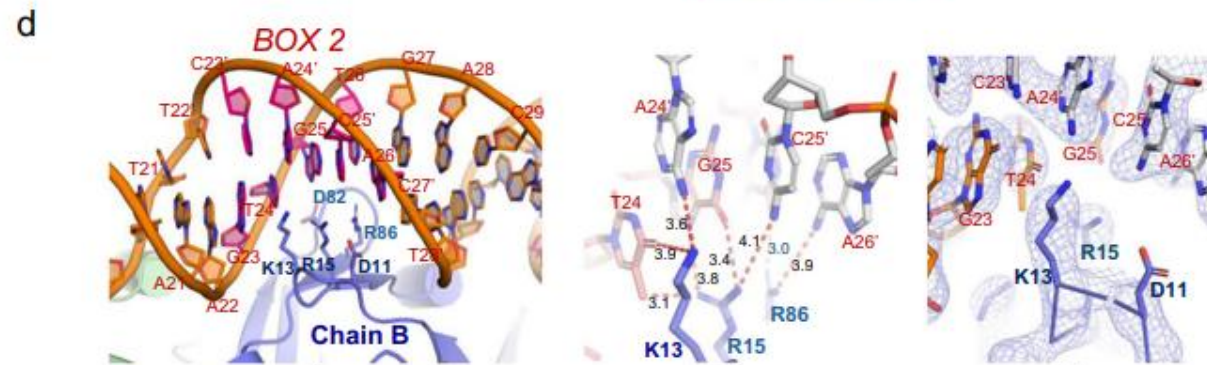
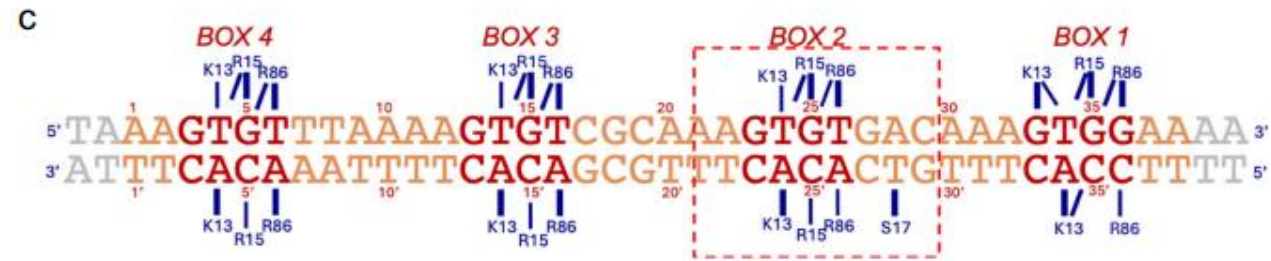
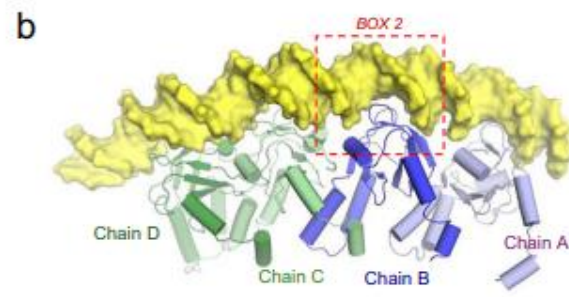
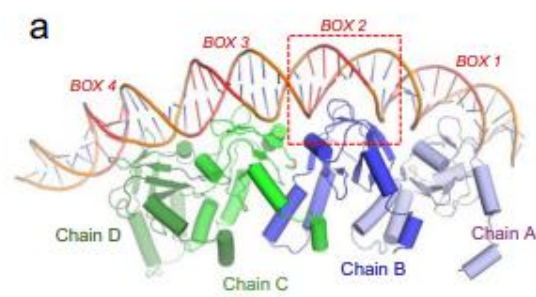


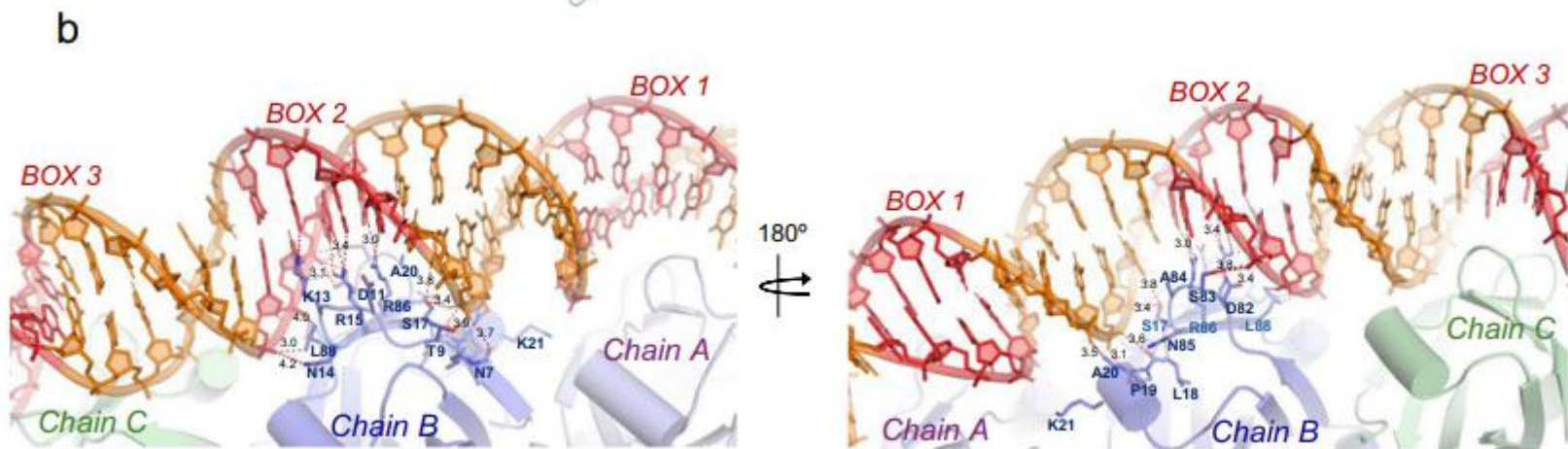
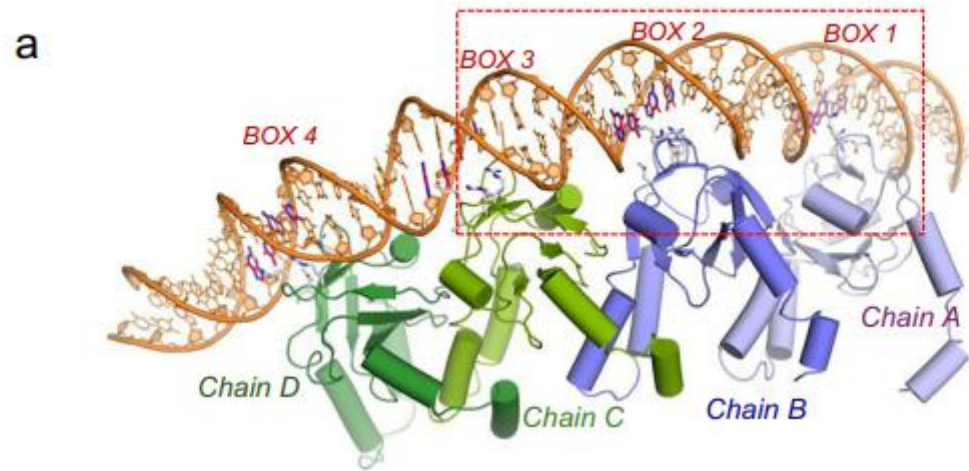
180°
↺



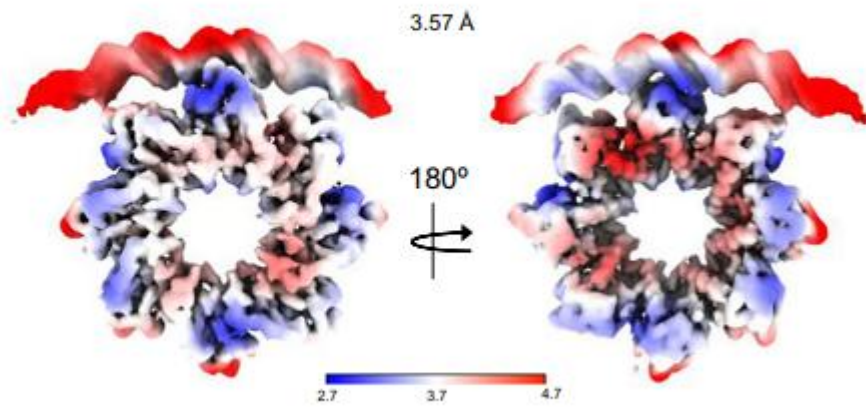
90°
↺



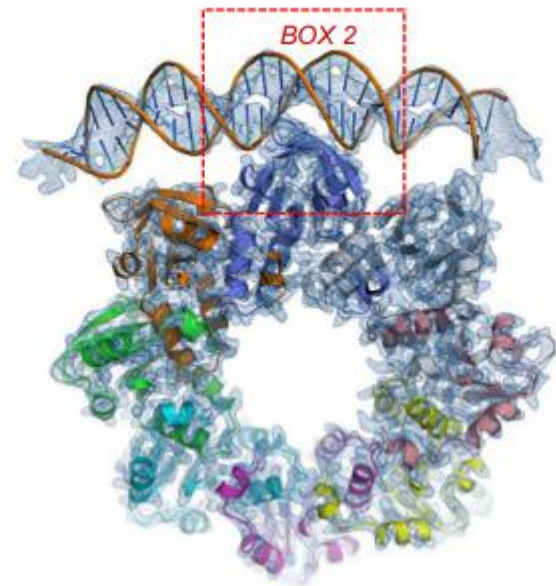




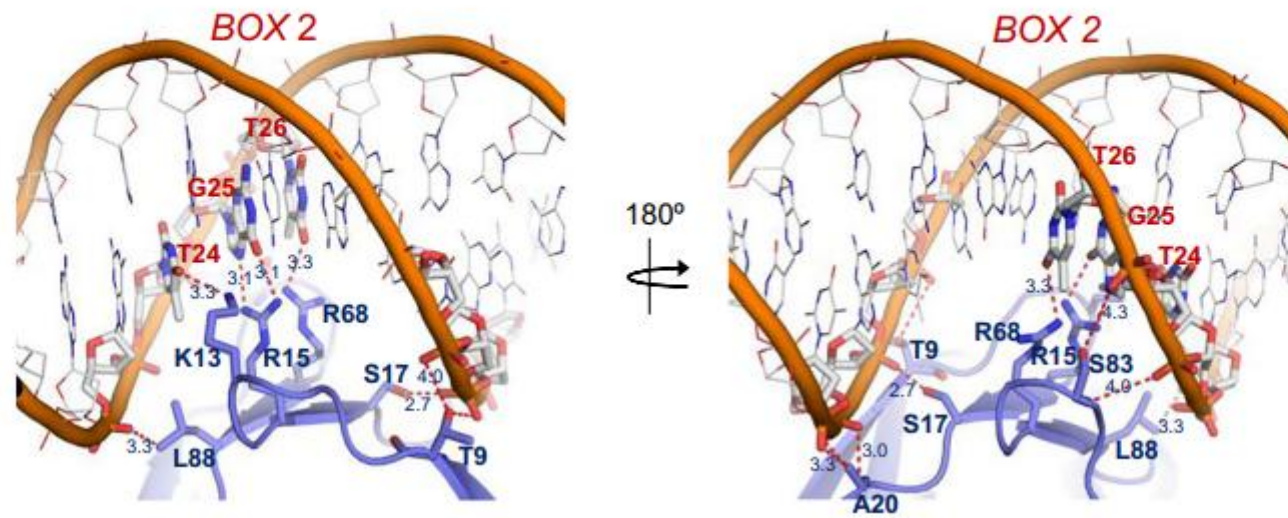
a

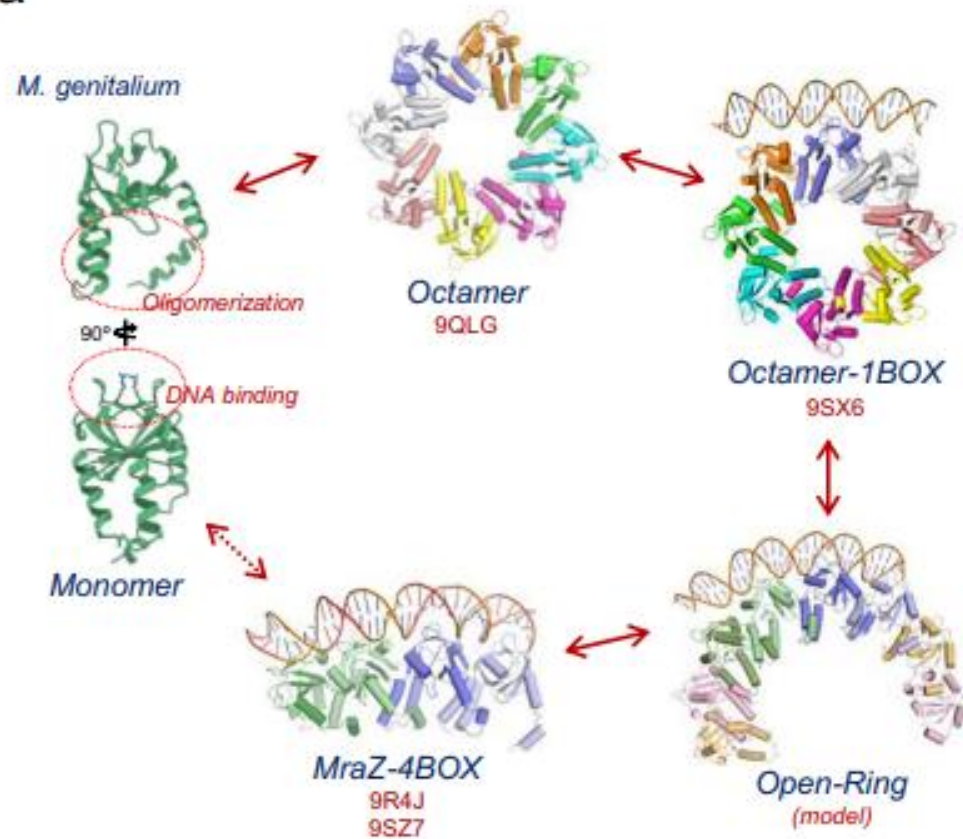


b



c



a**b**